

# VISHWA SAMUDRA ENGINEERING



REVOLUTIONISING INFRASTRUCTURE



BELIEVING IN THE POWER OF SILENT STRENGTH



## **RESPONSIBLE ENGINEERING**



### **Vision**

*Vishwa Samudra's vision is cemented in the statement:  
Once built, stands strong forever.*



### **Mission**

The pillars of our mission include:

- ✓ Advanced Machinery: Elevating performance with robust, intelligent equipment
- ✓ Manpower like Family: Concern and care for employees at all times
- ✓ One step ahead in Technology: Innovation that thinks ahead





# Chinta Sasidhar

*Chairman, Vishwa Samudra Group of Companies*

A Civil Engineer who went on to finish a Management Course at the University of Bath - UK, he is defined by a flair for creative excellence complemented by his result-oriented management skills.

The dynamic and driving force behind Vishwa Samudra's ascending trajectory, his illustrious journey started from turning around an IT company into a highly successful venture, followed by making an entry into Infrastructure of Seaports and the Marine industry. A modern entrepreneur, he commanded the fastest project execution of the Green field Krishnapatnam Port in a record time of 18 months! Being the 2nd largest private port in the country, in a span of 12 years the port achieved the capacity of 55 Mn tons. The Krishnapatnam Port Container Terminal touched a milestone of 5,00,000 TEUs in less than 5 years. He is known for his innovative approaches to adopting new

technologies and methods in construction and management.

As Chairman of the Vishwa Samudra Group, he is involved in the planning and strategy of the group companies, and is highly immersed in the flagship company Vishwa Samudra Engineering (VSE). One of India's fewest infrastructure companies with diverse spectrum of verticals - Roads, Ropeways, Ports, Fishing Harbours, Mining Structures, Irrigations, Tunnels, Metros, Airports, Buildings, Dredging, Railways, Electrical, Water works & more. This rapidly growing company, with high commitment to the environment, has completed some of India's best constructions.

A company with excellent team credentials, world class equipment and technology, VSE's expertise and experience is unmatched.

Mr. Sasidhar's brilliant technical knowledge, well-planned execution strategies and exquisite

leadership style has ensured that projects are completed well before their due dates.

A man known for his immensely generous philanthropic initiatives, he founded the Chinta Sasidhar Foundation (CSF) and Nandha Gokulam, to promote the cause of creating an economy for bulls through farmers and other mediums. As the President of CSF, he has created a 250 acre facility in Nellore, Andhra Pradesh, which is the house to over 600 cows & bulls, a wellness centre and Nandha Gokulam Life School - with 500 underprivileged boys undergoing free education, with the infrastructure and facilities being better than the best international schools.

He envisages the Vishwa Samudra Group as an enterprise known for innovation and sustainability contributing to the success story of emerging countries in global markets.





## Dr. Anil Yendluri

*Managing Director, Vishwa Samudra Eng. Pvt. Ltd.*

An IPS officer for 20 years and a recipient of the coveted President's Police Medal, he was a Former Director & CEO of the Krishnapatnam Port in Nellore, Andhra Pradesh – making it one of the world's finest ports, in terms of infrastructure, operations, and customer service. A visionary leader who made significant contribution since the inception of the port, that achieved a remarkable milestone of being inducted into the LIMCA Book of India Records in 2013 and 2017.

AS MD of VSE, he runs the everyday operations of all projects across verticals in India and overseas. His extensive experience as Kerala's Inspector General of Police, and strong academic qualifications – Master's Degree in Science, followed by an MBA and a Law Degree, and a PHD in the Faculty of Management Studies contribute to his aptitude in operating companies and managing organizations efficiently.



## Shivdutt Das

*Managing Director – Vishwa Samudra Holdings Pvt. Ltd.*

A management professional with over 24 years of global work experience in strategic finance, international business, manufacturing, risk, structured finance and projects, he has worked in key roles for reputed multinational organizations like United Spirits, ICICI Prudential, Bharti Axa, Tata AIA, Reliance Nippon and Ajeenkya D Y Patil Healthcare with exposures to India and International markets. With academic qualifications in Economics from Utkal University, Odisha, Management in Financial Services from Harvard Business School, Boston, USA and Post-graduation Diploma in Human Resources from National Institute of Human Resources, his inclination to academia and research is still a high point.

As the Managing Director, Shivdutt is responsible for Group Finance, Treasury, Information Technology, Human Resources, Marketing, Corporate Governance, Legal and Investor Relations. He also mentors the group level finance function with internal and external stakeholder management. With the Vishwa Samudra Group handling projects valued at over US \$ 2.6 Bn, he is responsible for fund raising for projects in India and overseas. His strong focus on innovation and implementation has enabled the Vishwa Samudra Group to become a major conglomerate in India.





## Abhishek Jalan

*President - Group CFO*

Mr. Jalan heads the Finance function at the group level for Group F&A, Estates, Regulatory & Statutory Compliance and Central Treasury. A man with him an impressive background and a wealth of experience in the field of Merger & Acquisitions, Fund Raising, Corporate Restructuring, Investor Relations. As a B. Tech & PGDBM having experience over 22 years, Mr. Abhishek Jalan has honed his expertise in the field of Financial Modelling, Business Planning, Audit and Risk Controls, Financial controls, Budgeting, Strategy, MIS. He stands as a key pillar for the Chinta Sasidhar Foundation.



## Dr. Barun Pal Chowdhury

*CEO - Design & Build, Vishwa Samudra Eng. Pvt Ltd*

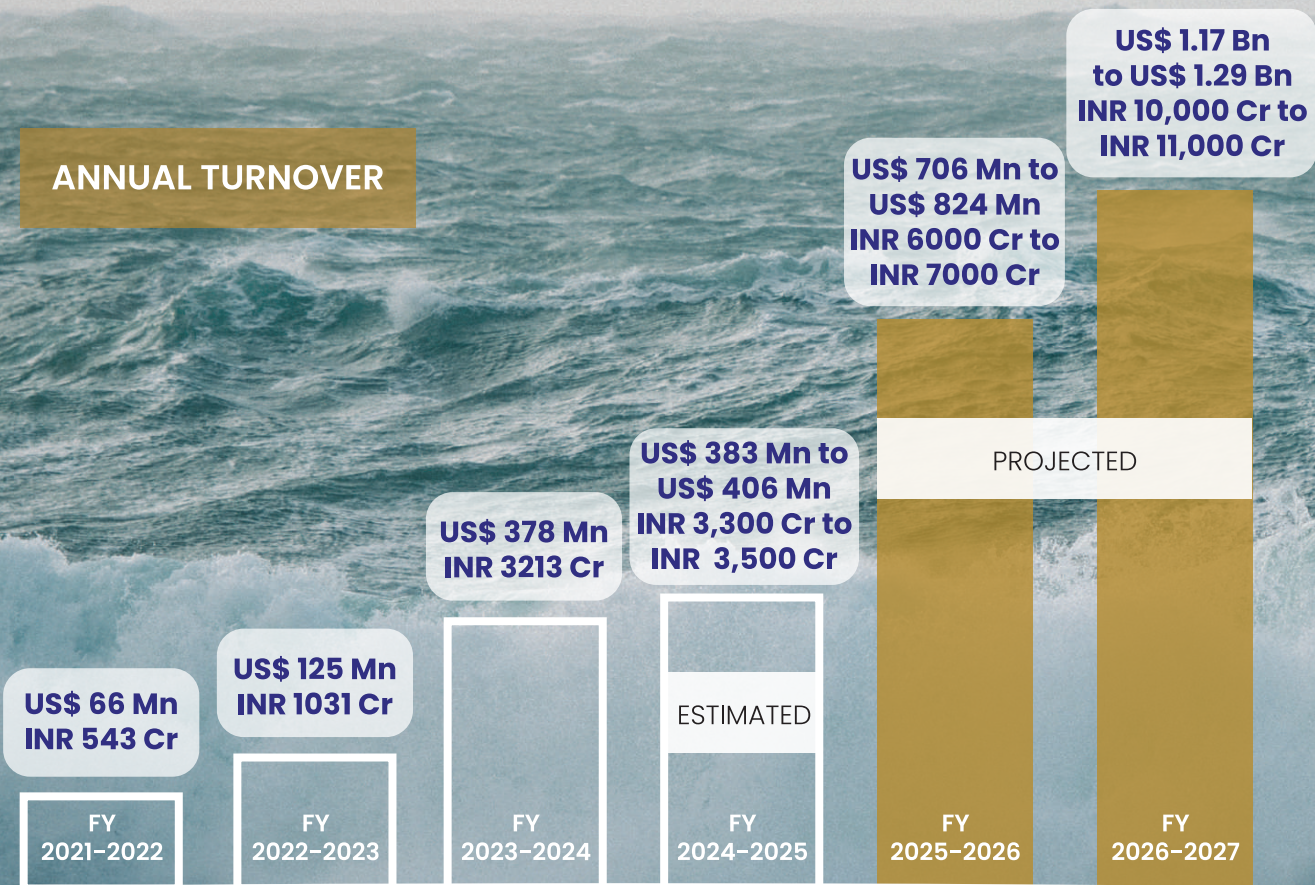
An architect with a PHD in Architecture, Construction & Infrastructure Management, with over 3 decades of experience and an alumni of the prestigious School of Planning and Architecture, New Delhi and the Faculty of Management Studies, Delhi University, his expertise in EPC projects across planning, policy making, financial management, business development, change management, design architecture, project management and construction, internationally and in India, have ensured he has been at the helm of crucial projects across reputed companies over the years like Godrej & Boyce, Shapoorji-Pallonji, Qatari Diar, Ashoka Buildcon to name a few.

He has successfully delivered on projects worth over US\$ 5 billion and has an expertise in the construction of mega projects such as Convention Centres, Museums, Hotels, Hospitals, Stadia, Large Factories, Statues and so on. His landmark projects include: Tech Parks and Commercial Buildings across India for TCS, ONGC, Ascendas, K Raheja and in Qatar for the Barwa Group. Hotels across India for Taj Vivanta and the Hiltons across Nigeria and Sierra Leone. Industrial facilities for GE, Bridgestone and Amway. ITPO Convention Center, Mahatma Mandir Museum, Colleges in India, Dubai and Algeria also add a lot of variety to his work. His experience in Hospitality includes a bed count of over 6000 across India, Vietnam, Dubai, Kuwait, Riyadh and Dammam. Dr. Barun Pal Chowdhury aims to take the Design and Build vertical at Vishwa Samudra Engineering to greater heights.



VISHWA SAMUDRA ENGINEERING, THE FLAGSHIP COMPANY OF THE VS GROUP, IS THE FASTEST GROWING INFRASTRUCTURE COMPANY IN INDIA, SURPASSING A REVENUE OF INR 3315Cr / US\$391 Mn IN FY 24- 25, AND GROSS ORDER BOOK VALUE OF INR 20,746 Cr / US\$ 2.412 Bn, IN JUST 3 YEARS OF OPERATIONS.

VSE plans to touch an Annual Revenue of INR 35,000 Cr / US\$ 4.1 Bn by 2028-2029.



# VSE

A multilateral business conglomerate headquartered in Hyderabad, India, the rapidly growing Vishwa Samudra Group boasts a strong presence in India with over 15 companies. Originating from the Krishnapatnam Port, the group has expanded its business interests internationally, including the UAE, Guyana, Tanzania, Saudi Arabia, Maldives, France, Germany, and Spain. Its diverse portfolio spans various sectors such as Infrastructure & Engineering, Construction, Logistics, Shipping Services, Maritime Services, Manufacturing, Commodity Trading, Security Services, Port Operations, and Real Estate.



# FUELING SUCCESS THROUGH METEORIC GROWTH

VSE's meteoric rise since January 2021 has been marked by innovative projects, unparalleled dedication, and an unwavering commitment to excellence. As we expand our horizons and embrace new challenges, we remain deeply rooted in our core values of quality, sustainability, and integrity. Our remarkable growth is a testament to the trust our clients and partners place in us. As we build the foundations of a brighter future, we have changed the narrative to become one of the fastest growing infrastructure companies in India!

**GROSS ORDER BOOK VALUE AS ON APRIL 10<sup>th</sup>, 2025 : INR 20,746 CR / US\$ 2.412 Bn**  
**TARGETED ORDER BOOK: US\$ 10 Bn, INR 85,000 Cr IN 2026-2027**

## OUR FINANCIAL FORTITUDE

Vishwa Samudra Engineering stands as a beacon of strength and reliability when it comes to handling **HAM (Hybrid Annuity Model)** projects. Our financial strength and robust track record exemplify our ability to seamlessly integrate design, construction, and operations phases, ensuring the timely and cost-effective delivery of projects. VSE has also become an expert in **EPC + F** projects, facilitating with Governments of developing nations across the world, raising funds from ECAs and Banks.

VSE becomes the first Indian Infrastructure company to secure a Swiss Bank Loan , for an NHAI/ NHLML Project

CURRENT CREDIT RATING : A

## OUR TEAM



\*Employed directly and indirectly

## 4 HAM PROJECTS WORTH: US\$ 740 Mn / INR 6295 CR

All these HAM Projects are under National Highways Authority of India (NHAI) and National Highways Logistics Management Limited (NHLML), two of India's premier infrastructure creators entrusted with developing, maintaining, and managing National Highways and Multi-modal Logistics like Ropeways, under the Ministry of Road Transport and Highways.



- 1.Jammu Highway Project
- 2.Kollam Highway Project
- 3.Kannur Highway Project



- 1.Varanasi Urban Ropeway Project

VSE's HAM projects not only meets but often exceeds industry standards. Our unwavering dedication to innovation and the highest ethical standards position us as a formidable force in the realm of HAM projects, ready to transform visions into tangible, enduring infrastructure assets that benefit the country for generations to come.



# VISHWA SAMUDRA ENGINEERING

## A PIONEER OF SORTS IN QUALITY AND TIME

Vishwa Samudra Engineering was formed with the objective to become a world class Engineering, Infrastructure and Construction Company in providing state-of-the-art engineering and construction services.

Vishwa Samudra's work over the years has been transformative with futuristic thinking and commitment towards a sustainable environment. The company offers an integrated suite of multi-disciplinary infrastructure services that address complex challenges and deliver turn- key projects that reflect our domain knowledge and unwavering focus.

The company has evolved as one of the fastest growing companies in the country with projects across a wide spectrum of verticals, powered by a strong and committed team of professionals.



## KEY CLIENTELE





# OUR CURRENT ROAD PROJECTS IN INDIA

VSE's precision engineering, tech-focussed approach, cutting-edge materials and inclination to green processes in road construction technologies ensure durability, efficiency, and sustainability, setting new benchmarks in modern infrastructure.



## RURAL ROADS

Construction of Village Roads (1006 Kms) under Asian Infrastructure Investment Bank in the State of Andhra Pradesh – India.

Project Cost: **INR 615 Cr / US\$ 72.3 Mn**



Rural Road constructed in Andhra Pradesh



## ONGOING

Upgradation of Rural Roads in Thiruvananthapuram, Kerala under KIIFB, using the FDR Technology with the StabilRoad additive. Total of 29.73 Kms.

## RECENTLY COMPLETED

Construction of 257.62 Kms of Rural Roads in the State of Uttar Pradesh under UPRRDA, total of 33 Roads using Full Depth Recycling (FDR) technology with the additive StabilRoad from Germany.



FDR in process in Uttar Pradesh with StabilRoad

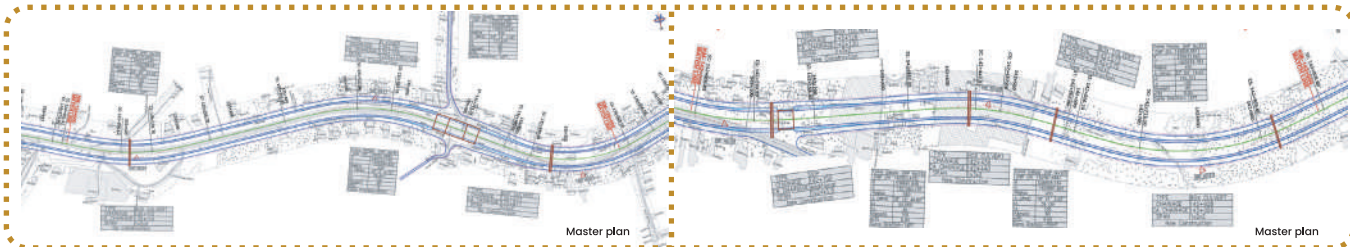


35,000 tons of Carbon Emissions Saved



# KANNUR

National Highway 17 in Kannur (6 lanes: 29.985 Kms), Kerala State – India.  
**Project Cost: INR 2038 Cr / US\$ 240 Mn**

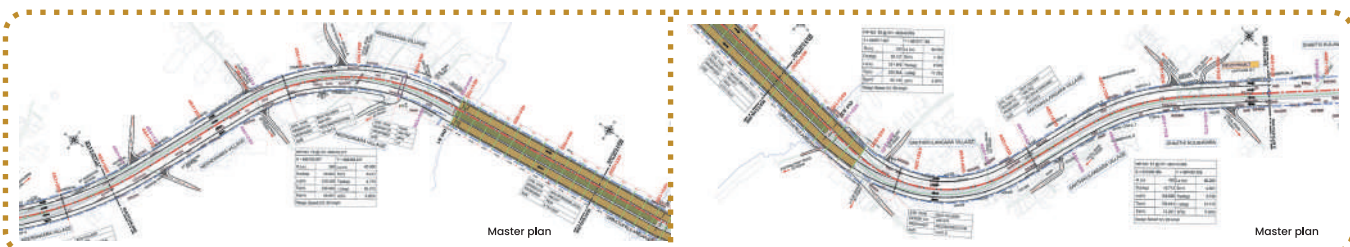


## NATIONAL HIGHWAY PROJECTS WITH NHAI



# KOLLAM

National Highway 47 in Kollam (6 lanes: 31.5 Kms), Kerala State – India.  
**Project Cost: INR 1580 Cr/ US\$ 186 Mn**





# PARAVOOR

National Highway 47 in Paravoor (6 lanes: 37.5 Kms), Kerala State – India.  
**Project Cost: INR 1152 Cr / US\$ 136 Mn**

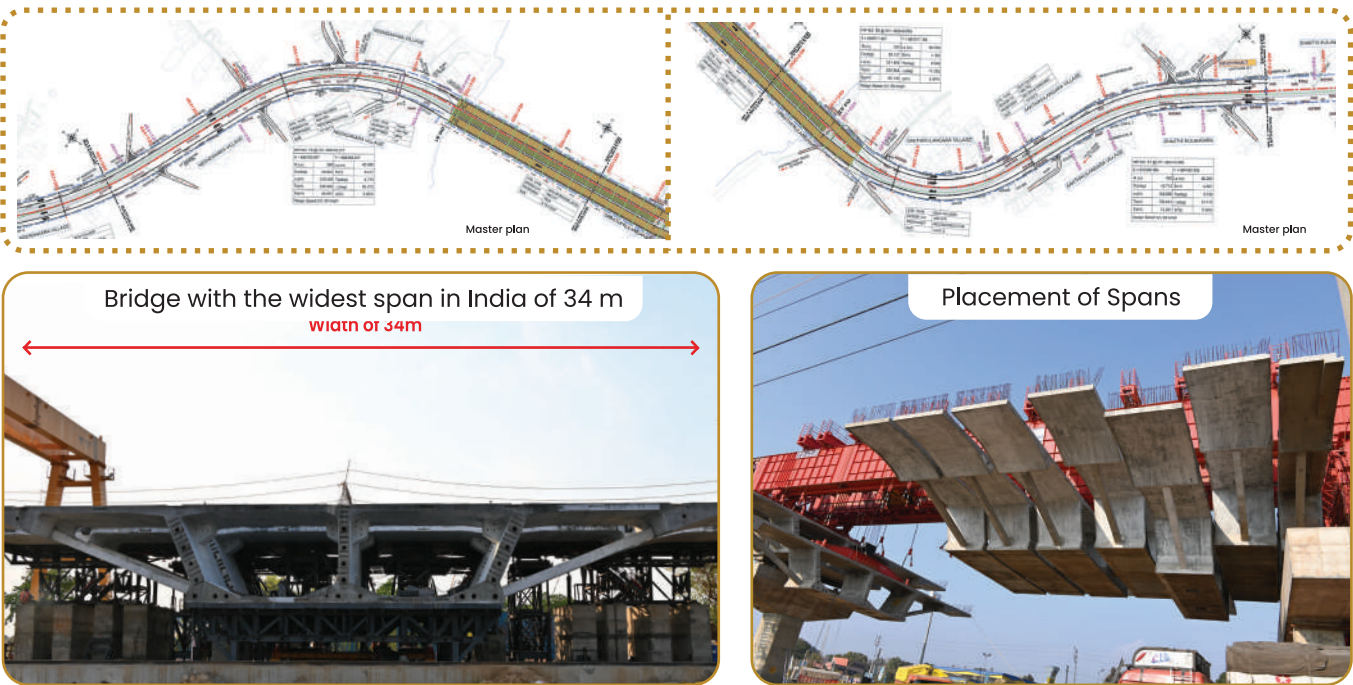


## NATIONAL HIGHWAY PROJECTS WITH NHAI

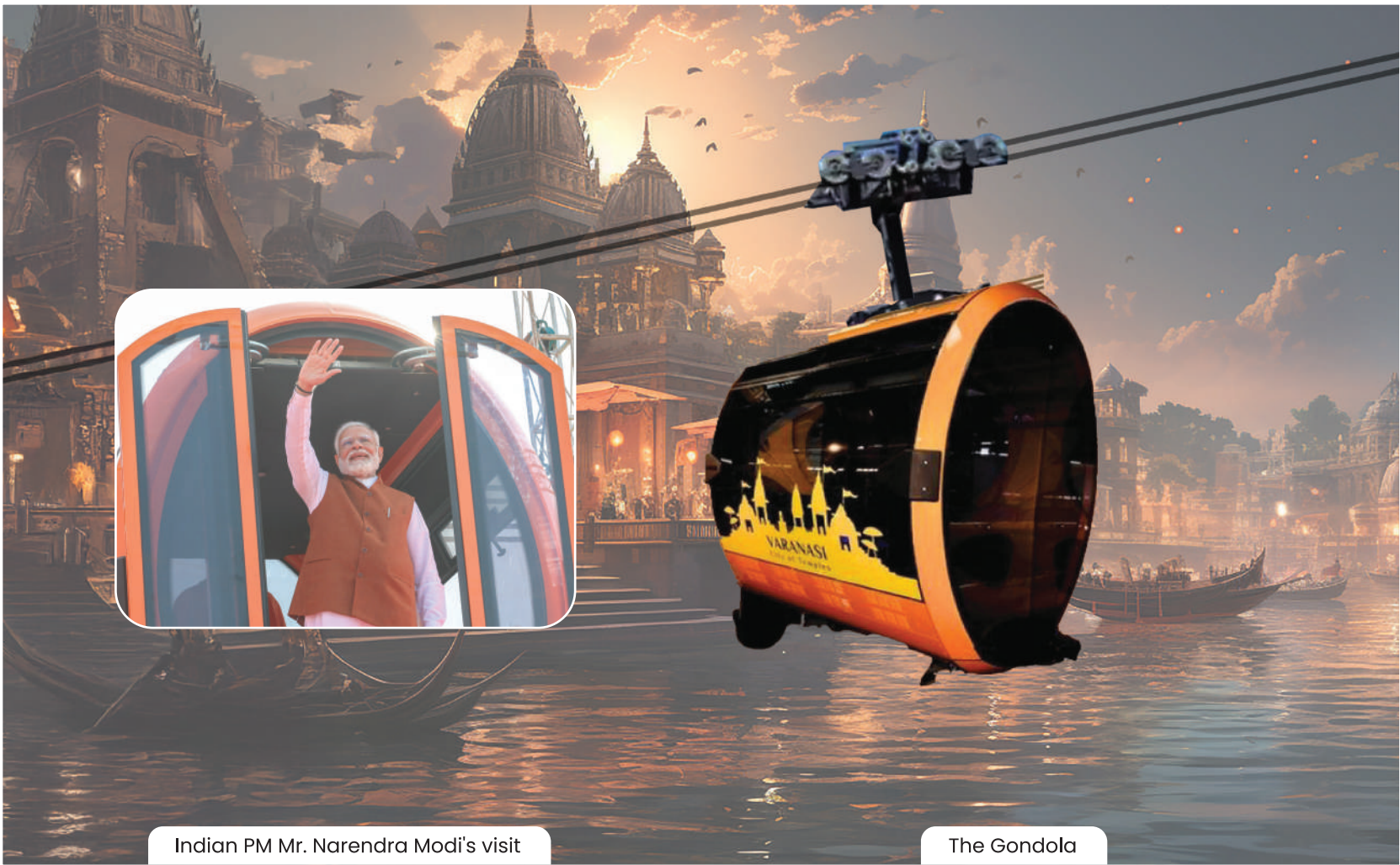


# JAMMU

National Highway 244A in Jammu (6 lanes: 35.15 Kms), Jammu & Kashmir State – India.  
**Project Cost: INR 1870 Cr / US\$ 220 Mn**







Indian PM Mr. Narendra Modi's visit

The Gondola

# REDEFINING URBAN TRANSPORTATION WITH ROPEWAYS

VSE became the first Indian Infrastructure Co. to secure a Swiss Bank Loan for this NHAI (NHLML) Project: **EUR 40 Mn**

Vishwa Samudra Engineering has been awarded the Development, Operation and Maintenance of the Ropeway Project from Varanasi Cantonment to Godowlia Chowk, Uttar Pradesh – India, under the HAM Model.

**Length of 3.85 KM**  
Passenger capacity per hour per direction: **3000**

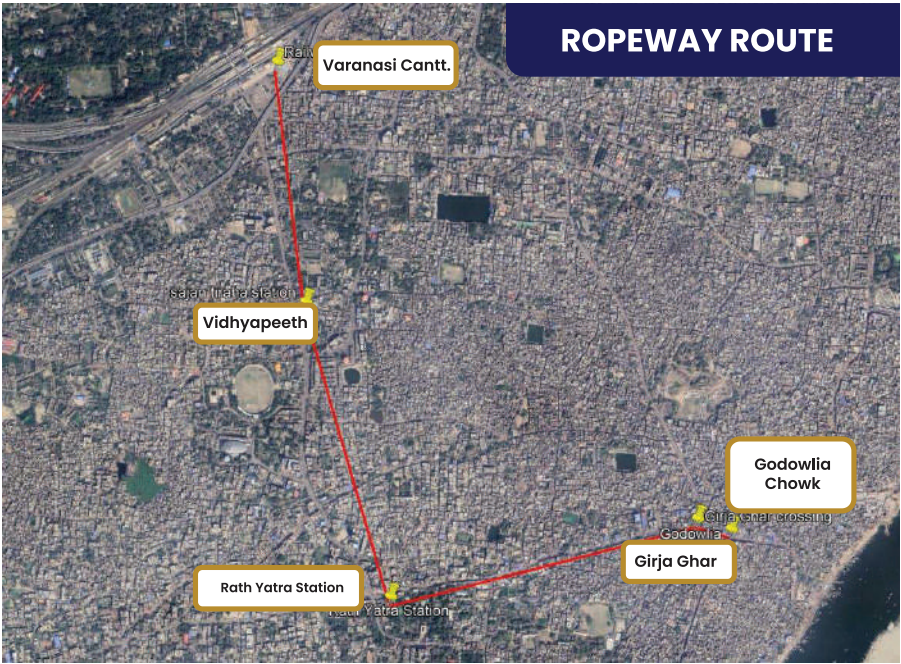
**Contract Value: INR 807 Cr / US\$ 95 Mn**  
**Department:** The National Highways Logistics Management Limited (NHLML), Govt. of India



India's First and the World's Second Urban Ropeway Project

Technology Partner  
**BARTHOLET**

Design by  
**PORSCHE DESIGN**



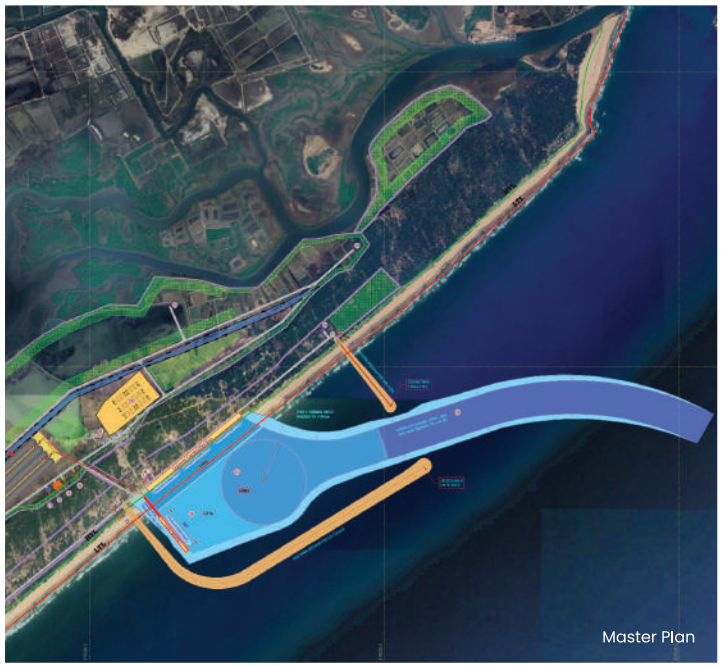


# CURRENT MARINE PROJECTS IN INDIA

## THE NEXT EPISODE: MULAPETA PORT

The Vishwa Samudra Group bagged the project to construct the Mulapeta Port, in Andhra Pradesh – India, as an EPC contract.

**Period of Completion: 30 Months**  
**Work Commencement Date: April 18, 2023**  
**Contract Value: INR 2949.7 Cr / US\$ 347 Mn**  
**Department: Andhra Pradesh Maritime Board, India**



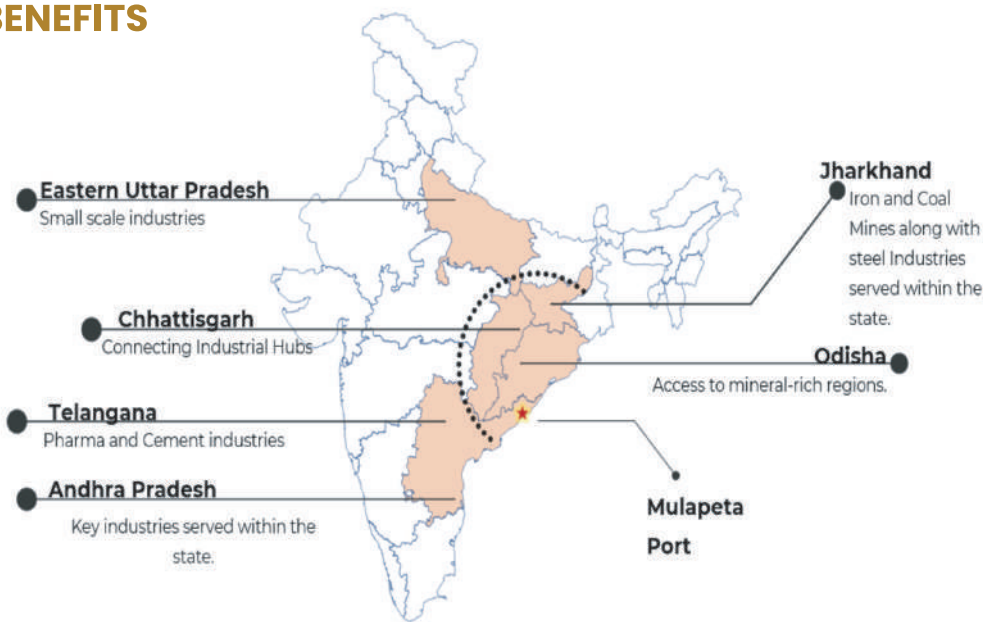
## SALIENT FEATURES AND SCOPE OF WORK

Breakwaters	South: 2,455 mtr (Rock Qty – 19.40 Lac MT) North: 580 mtr (Rock Qty – 2.71 Lac MT)
Indopods	Indopods – 54,440 Nos 4 Cum – 30,820 Nos 6 Cum – 21,131 Nos 7 Cum – 2489 Nos
Dredging	15.85 Million Cum (Reclamation Area – 246.44 Ha)
Approach Channel	3.3 Km (Dia of Turning Circle – 575 mtr) Depth: 19.2 m
Berths	• General Cargo Berths (3 Nos.) Length – 810 m and 15.5 m draft • Coal Berth (1 No.) Length – 300 m and 17.6 m draft
Onshore Infrastructure	Admin Buildings, Customs Buildings, Port Operations Infra, Security & Reception Buildings, Fire Station, MRSS, Storage and R&D Yards, STP, ETP, Green Belt.
Internal Road	10.7 Kms Length
Internal Rail Network	10.52 Kms Length

VSE's indigenous design and mould engineered 'Indopod' used in the construction of breakwaters for Ports. They are made in 3 dimensions: 4 Cum, 6 Cum and 7 Cum, and placed accordingly.



## HINTERLAND BENEFITS





# FISHING HARBOURS

## HARBOURS OF PROSPERITY

Vishwa Samudra Engineering has been bestowed with the Construction of building Fishing Harbours in Andhra Pradesh, on a lumpsum contract basis.

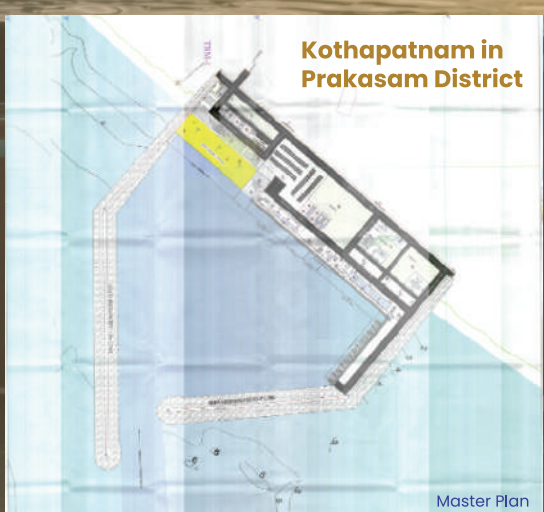
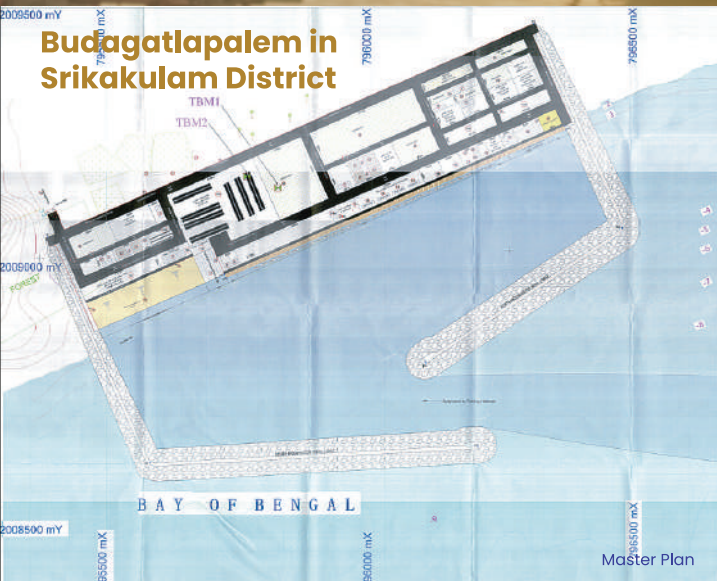
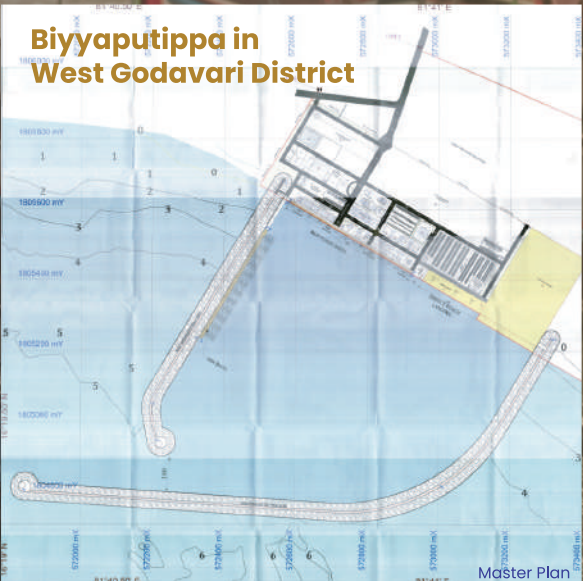
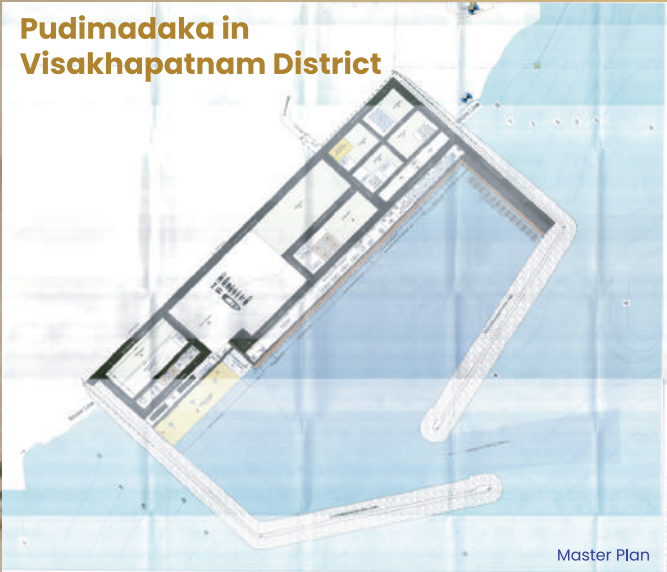
**Contract Value:**

**INR 1495.35 Cr / US\$ 176 Mn**

**Department:**

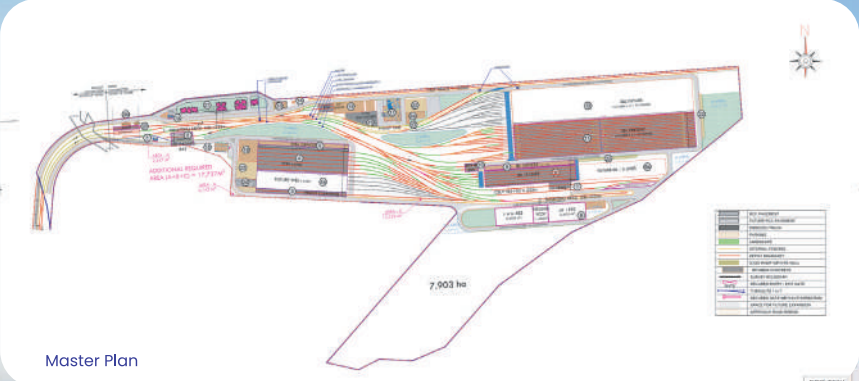
Andhra Pradesh Maritime Board, Govt. of Andhra Pradesh

### Pudimadaka in Visakhapatnam District





# MUMBAI METRO DEPOT



Vishwa Samudra Engineering in a JV with SEW Infrastructure bagged the Construction of the Metro Line - 4 Mogharpada Depot in the Mumbai Metro Rail Project.

- Depot, Infrastructures operational control centre
- Administrative building, maintenance and workshop buildings
- Architectural finishing works
- Design and build of pre-engineered building structures of car depot and more

**Contract Value:** INR 905.77 Cr / US\$ 107 Mn  
**Department:** MMRDA, Govt. of Maharashtra

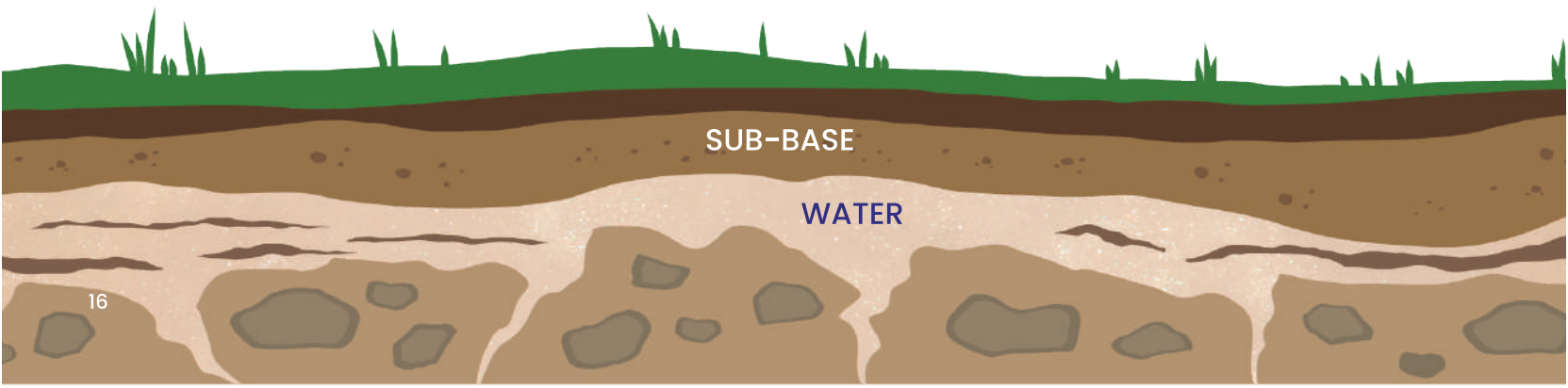


## STABILROAD TO COUNTER BAD SOIL CONDITIONS



The Mogharpada Metro Depot location which is particularly known for its marshy soil conditions becomes the ideal soil type for StabilRoad to work its magic. With a water surface below the sub-base that keeps the soil conditions highly moist, the unique property of the additive StabilRoad ensures the stabilised surface prevents the entry of water or air to the sub-base.

Soil stabilization technology is an effective solution for improving the load-bearing capacity and durability of marshy land, making it suitable for construction and infrastructure development.





# CURRENT INTERNATIONAL ROAD PROJECT

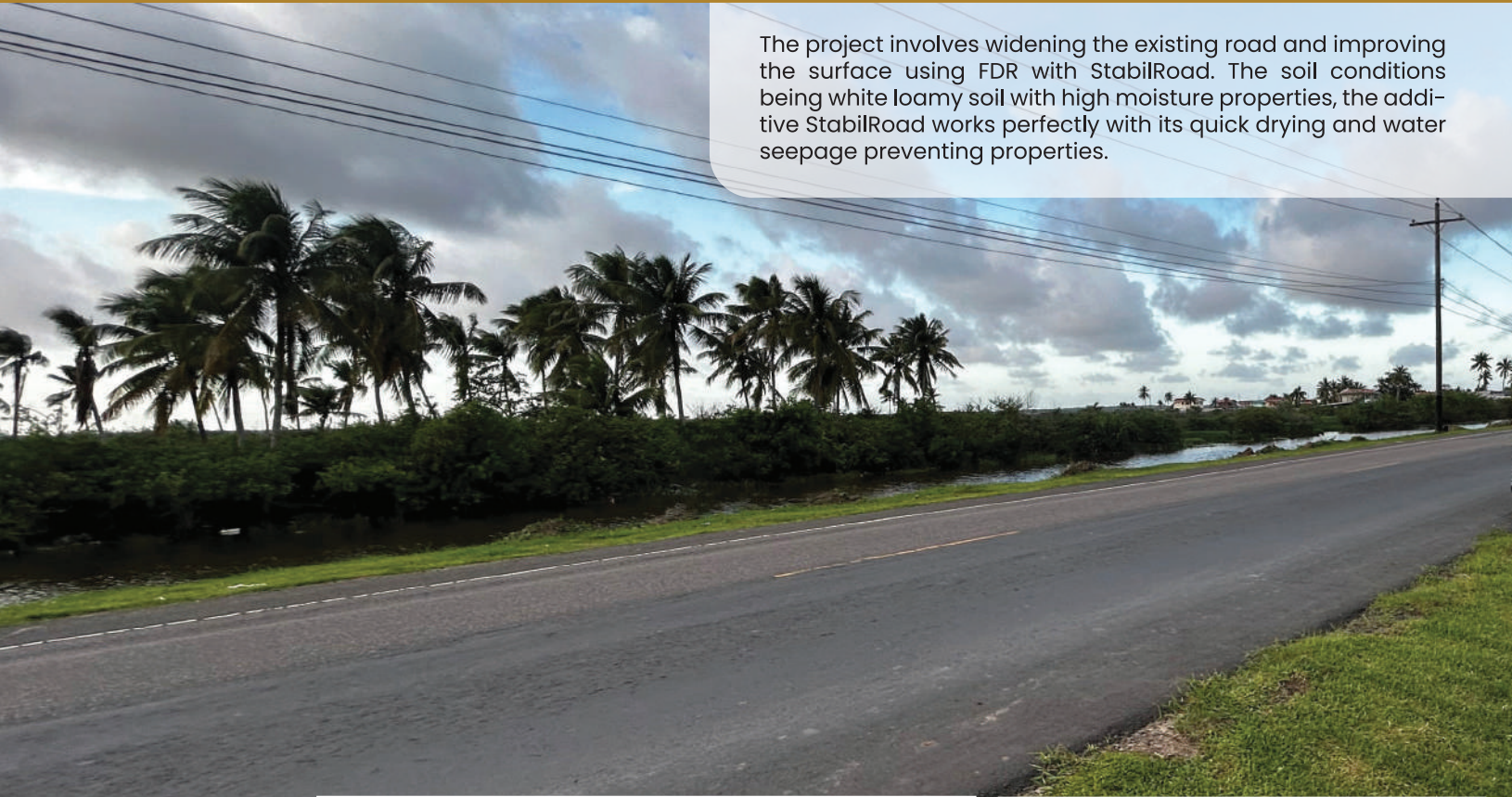


**Rehabilitation of the 2 Lane Road to 4 Lane with FDR Technology**  
Palmyra to Moleson Creek, Berbice – Guyana  
**71 Kms at US\$ 412.4 Mn on EPC + Finance Mode**  
Ministry of Public Works, Govt. of Guyana

Guyana, a country in South America in the Caribbean region, is one of the fastest growing countries in the world with a GDP growth of over 52% annually, fuelled by the booming oil production.

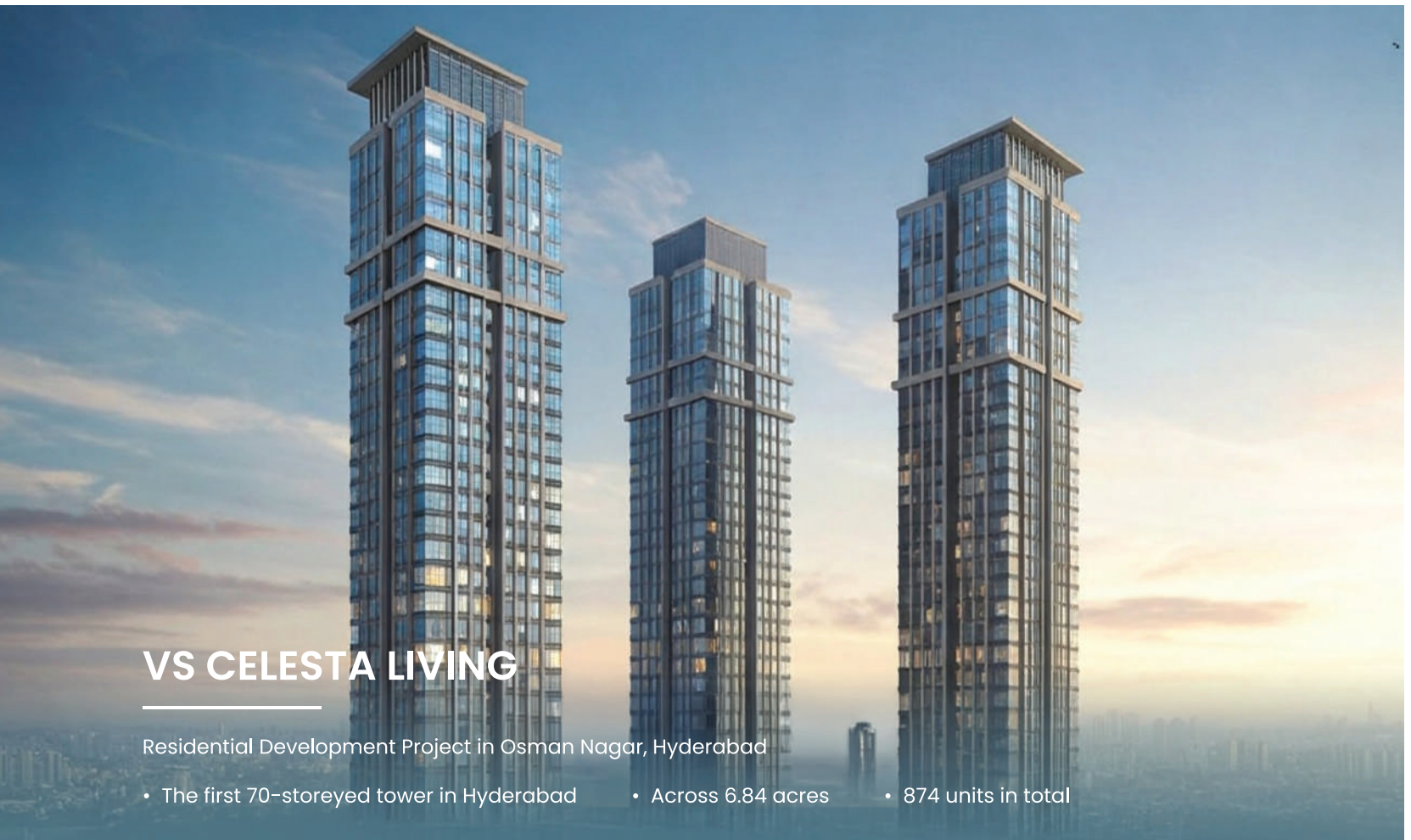
This road project is a key economic corridor between Guyana and Suriname, a neighbouring country, also part of the thriving economy development due to the production of oil.

The project involves widening the existing road and improving the surface using FDR with StabilRoad. The soil conditions being white loamy soil with high moisture properties, the additive StabilRoad works perfectly with its quick drying and water seepage preventing properties.





# LUXURY LIVING REIMAGINED



## VS CELESTA LIVING

Residential Development Project in Osman Nagar, Hyderabad

- The first 70-storeyed tower in Hyderabad
- Across 6.84 acres
- 874 units in total



## LUXURY LIFESTYLE REDEFINED IN VISAKHAPATNAM

Homes, Mall & 5-Star Hotel

VS creates magic with a destination where luxury, lifestyle, and leisure converge seamlessly. This opulent project in Visakhapatnam would redefine luxury. This state-of-the-art project features a world-class shopping mall, an exquisite 5-star hotel, and opulent residential spaces, creating a harmonious blend of elegance and convenience.



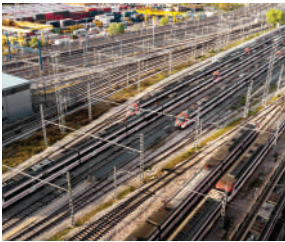
# OUR CURRENT WORK CAPACITY ACROSS INFRASTRUCTURE VERTICALS

## BASED ON WORK DONE TILL DATE



### ROADS

With FDR Technology: can do at a speed of 2.5 Lane Kms per day with 1 unit of machines; can be upscaled to 10 or more units per day



### RAILWAYS

Up to 52 Kms completed in the first project – can upscale as per the need; Experienced in Railway Operations with a strong team



### ELECTRICAL

Currently executing projects of 132 KV and all voltages



### BUILDINGS

Currently executing 70 Floors and above in a single building



### GREENFIELD AIRPORTS & RUNWAYS

Runway Lane capacity of 3 Kms in 3 months



### TUNNELS

Executed a 10 Km twin tunnel at a construction speed of 22.5 m per day and Diameter of 10 M, Vertical Lift up to 110 m; Capable of handling TBMs from diameter 10m – 15m.



### ROPEWAYS

Currently executed / Launching a 4 Km Urban Ropeway to transport 96,000 passengers per day; Capable of handling teams of 10 such projects at a time; consists of a Training Centre for manpower



### DAMS

Done up to Storage of 294.29 Mn CuM, can handle 2 times bigger Discharge: 7391 CuMecs Canal Length: up to 100 Kms Height: up to 50 m



### GREENFIELD SEAPORTS

Specialised in Identifying Port Locations, Planning & Design, Financing Constructing, Optimising Operations & Costs/Ships, making the Port customer-centric and tech-enabled; Experience of over 45 Berths, Container Terminal, 6 Mn TEUs, Over 4 Kms of Breakwaters & 2 Kms of Shore Protection; Deepest Draft of 22 m; Touching Capacity of 55 Mn tons in under 12 years



### DREDGING

Achieving a capacity of over 1 Lakh CuM per day, having achieved 5 Mn CuM in 45 days; A world class dredging division that can take on 10 times more work if we have the opportunity. Depth beyond to 20 m; Currently owning 3 TS Dredgers and 4 CS Dredgers.



# OUR CORE COMPETENCIES



## ROADS BY STABILROAD

- Full Depth Recycling and Soil Stabilization with the Additive StabilRoad from Germany
- StabilRoad helps in self healing and self filling of cracks with its 100% Natural Enzymes
- Design and build of Greenfield of Rural Roads, Highways, Expressways, City Roads

Completed:

**National and State Highways (Kerala, Jammu & Kashmir, Manipur, Andaman & Nicobar, Punjab, UP, Bihar)**

**City and Rural Roads (AP, Telangana, Kerala, UP)**

**Seaports (Krishnapatnam Port – Nellore, Katupalli Port – Chennai)**



## PORTS & FISHING HARBOURS

- Construction of Breakwaters & Shore Protection
- Dredging, Reclamation, Navigational Aids
- Onshore Facilities & Port Infrastructure, Bulk Material Handling & Equipment

Completed: Krishnapatnam Port, India

Ongoing:

**Mulapeta Port, Srikakulam–Andhra Pradesh, India**  
**5 Fishing Harbours in Andhra Pradesh, India**



## BRIDGES & ELEVATED CORRIDORS

- Design and Build of Complex Bridges and Elevated Corridors

Ongoing:

**The current NHAI Project in Jammu and Kashmir, the Jammu Expressway Project redefines the highest infrastructural standards and innovation with its 4 distinct Bridges, each spanning an impressive 5.4 kilometres, with a width of 34 meters, making them the longest of their kind under execution in India.**





# TUNNELS

VSE’s superior tunnel construction technologies and team have in the past executed a 10 Km twin tunnel at a construction speed of 22.5 m per day and Diameter of 10 M, Vertical Lift up to 110 m. With expertise in constructing with NATM & TBM methods, the team is capable of handling TBMs from diameter 10m – 15m.



# ROPEWAYS

Contstructing India’s First Urban Ropeway & the world’s second. With 154 Gondolas over a 3.85 Km route, with a Swiss technology partner to transport 96,000 passengers per day.

Ongoing:

**Varanasi Ropeway Project, Uttar Pradesh, India**



# AIRPORT RUNWAYS

Built the fastest Runways & Taxiways in less than 3 months under adverse weather conditions, to be fully functional. Best suited for Defence airports which have to be constructed in less time in extreme weather conditions.

Completed:

**Main and Secondary Runways, Taxiways at GMR Airport, Hyderabad – India**  
**Landside Roads at the Mopa International Airport, Goa – India**





# CIVIL WORKS

Our expertise in the construction of Buildings of all kinds – Schools, Libraries, Labs, Food Processing Units, Cold Storage, Accommodation Facilities, Agriculture Godowns, etc.

Completed:

- International School (Over 1.2 Lakh Sq.ft. in G+3 Floors, 8 Acres)
- Food Processing Units, Cold Storage, Accommodation Facilities, Agri godowns, etc.
- CISF Building in Goa with 8 floors using Steel
- Luxury Residential Apartments (109 Flats, 9 Floors)

Ongoing: **Nandha Gokulam Life School, Varanasi Ropeway Stations, ICVT Kolkata, etc.**



# IRRIGATION

The VS team for Irrigation & Tunnels, in their past experience have successfully completed lift irrigation and tunnel projects with advanced methodologies and technologies.

Completed:

Construction of a 4 Kms Tunnel in 11 months and a 1.6 Km Tunnel in 5 months.



# DREDGING

- Capital and maintenance dredging for ports and harbours
- Land Reclamation, beach nourishment, intake and outfall
- One of the fewest companies in India to have a strong fleet of CSD and TSD Dredgers.

Ongoing:

**Mulapeta Port & 5 Fishing Harbours in Andhra Pradesh, India**





# ELECTRICAL

Specialising in providing innovative, high-quality electrical solutions that ensure reliable and sustainable power distribution, this vertical offers:

- Design, supply, erection, testing and commissioning of Substations, Transmissions Lines, Distribution Lines
- Rural Electrification Works
- Feeder Separation
- System Strengthening and allied electrical services

Ongoing::

**4 Packages of Distribution Infrastructure for unelectrified households, Uttar Pradesh**



# LOGISTICS

Logistics solutions for construction projects including Warehousing and Cargo Handling, Schools, Libraries, Labs.

**Fleet size of Logistics Trucks: Over 650 Trucks**



# MECHANICAL

- Fabrication and laying of Edible Oil Pipeline along with junction valves.
- EPC of Material Handling Systems like Conveyors, Stacker cum Re-claimers, and Rapid Wagon.
- Loading Systems and other general fabrication and Foundry works.

# R&D

Innovation in Construction Techniques, Sustainability Initiatives, Smart Infrastructure  
Collaboration with Academia and Industry, Digital Transformation  
Patents and Intellectual Property: **Indopods**



VSE's indigenous design and mould engineered '**Indopod**' used in the construction of breakwaters for Ports. They are made in 3 dimensions: 4 Cum, 6 Cum and 7 Cum, and placed accordingly.



# VISHWA SAMUDRA DREDGING



With unparalleled expertise in Marine **Dredging Operations over the last 15 years**, the VS Group, with its own dredgers, is one of the fewest companies in the country to be a dredging operator providing precise, efficient, and environmentally responsible solutions for complex maritime projects globally.

- Executing projects in the territorial waters of India and aiming to expand its services worldwide, VS Dredging's activities include capital and maintenance dredging for ports and harbours, land reclamation, beach nourishment, intake and outfall, construction of breakwaters and more.
- One of the fewest Infrastructure companies in the world to own and operate dredgers.
- The current fleet consists of 3 Cutter Suction Dredgers: 2 CSD 500s from Royal IHC, Netherlands and 1 CSD 300; 1 TSHD 5500 from China. There is also a custom-manufactured TSHD 8000 worth EUR 100 Mn in the pipeline.
- **Having recently dredged 5 Mn CUM in Srikakulam at the Mulapeta Port, at a record speed in under 45 days, the dredging fleet and team are one of the best in the subcontinental waters.**

Vishwa Teja



VS Lava



VS Kusa





# EQUIPPED WITH THE CUTTING-EDGE OF CONSTRUCTION

One of Vishwa Samudra's core strengths is its cutting-edge infrastructure and robust fleet of machinery and equipment to accomplish projects of any size and scale. Through superior technology, rapid allotment of equipment and deployment of qualified personnel, we ensure all the needs of the project are met comprehensively and within time. We have invested in procuring some of the most advanced and preferred fleets in the industry, which include:

- Dredgers ● Barges ● Launching Girders ● Diesel Bowser Trucks
- Paver Finisher ● Hot Mix Plant, Batching Plant ● Motor Graders
- Soil Compactors ● Cold Recycler/Soil Stabiliser
- Tractor Additive Spreader ● Mobile Crusher ● Piling Rigs
- Excavators, and more

ELMD fleet size: 587 Machines  
ELMD amount spent: INR 128 Cr / US\$ 15.6 Mn  
Dredgers Amount Spent: INR 230 Cr / US\$ 27 Mn

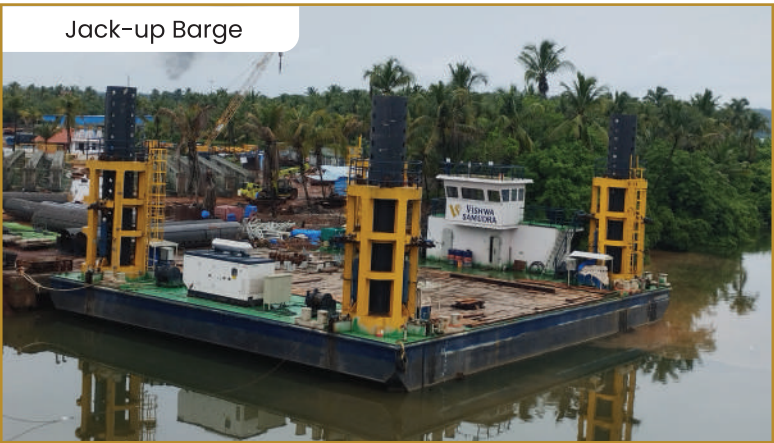
Piling Rig Machine



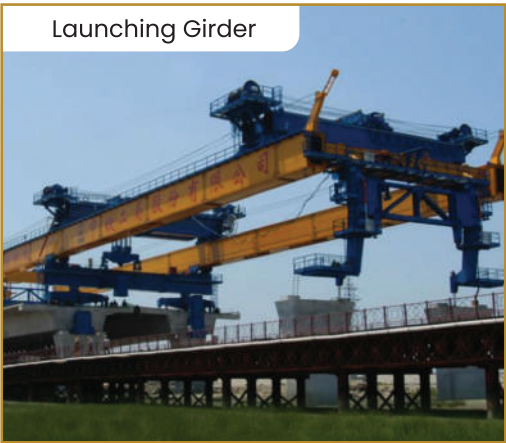
Dredger Vishwa Teja



Jack-up Barge



Launching Girder





VISHWA SAMUDRA ENGINEERING HAS THE EXCLUSIVE RIGHTS TO USE STABILROAD IN INDIA, GUYANA, TANZANIA AND SURINAME

StabilRoad® today is one of the most advanced and innovative soil stabilization materials and technologies in the world. StabilRoad® is a whitish powder made of 100% natural minerals with no synthetic chemicals. The high quality, superior warranty and successful track record of this German Technology over the last 20 years across all continents in different climate zones and numerous soils of different types, shows the vast experience and expertise in constructing roads of the best quality.



*This stabilizing process entails the mixing together of existing soil (including old asphalt), the StabilRoad® additive and cement (Portland cement needed, clinker content > 95%).*

- ACCELERATES the construction process
- REDUCES the cost of work
- ENHANCES cement hydration
- Makes the soil HIGHLY RESISTANT to absorption of water
- Creates a very STRONG, ELASTIC, WATERPROOF and FROST- PROOF surface
- NO NEED TO EXCAVATE the old or existing soil
- NO NEED TO DISPOSE the old soil/pavement
- The constructed roads can be PUT-TO-USE WITHIN HOURS after construction
- The constructed surface PREVENTS RUTTING and CRACKING
- EXPENSES related to excavation, transportation and utilization of soil are EXCLUDED OR MINIMIZED
- There is little or NO SIGNIFICANT NEED FOR THE PURCHASE AND TRANSPORT OF INERT AGGREGATES
- HIGHLY EFFICIENT in extreme climatic zones (rains, heat and cold)



ESG Consultant for the Vishwa Samudra Group: PricewaterhouseCoopers (PwC)

Eco-friendly initiatives include:

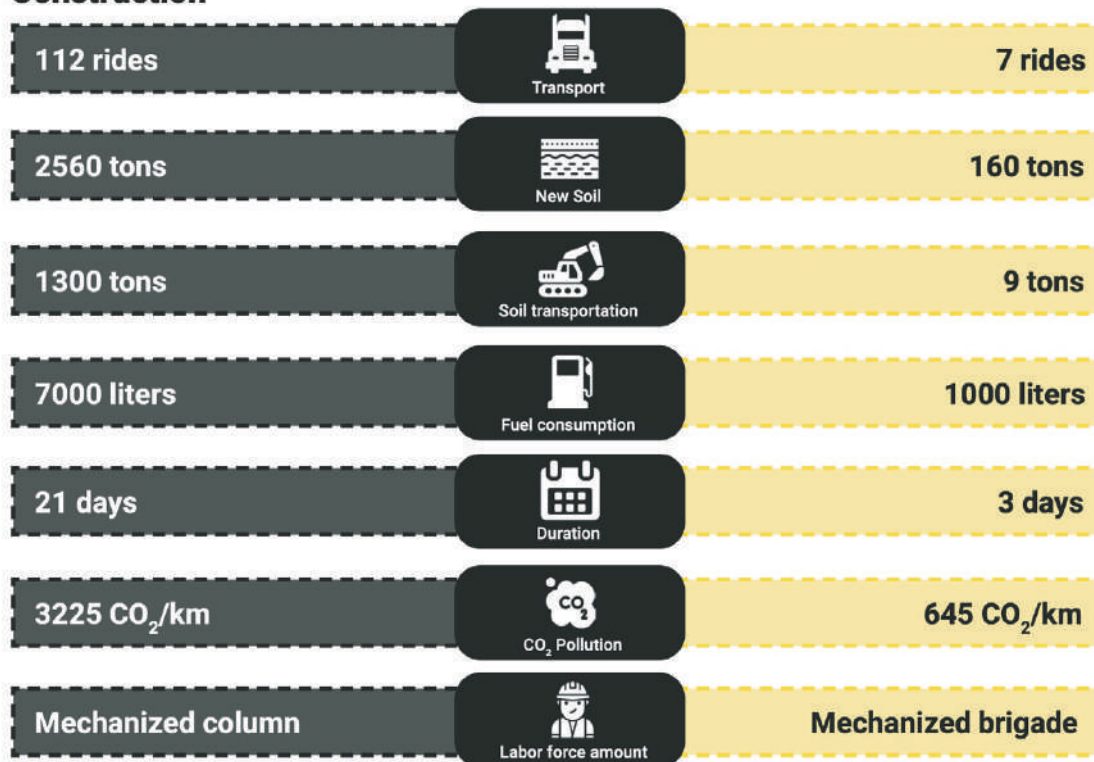
- Constructing roads with reduced need for stone aggregate by close to 85%, in turn saving mountains from being mined
- Manufacturing 100% compostable packaging products to replace global single-use plastic.
- Efficient systems and processes to manage Waste, Water and Energy.



## Traditional Road Construction

For a 1 Lane Km Road

**StabilRoad®**



A total of approx. 950 Lane-Km has been executed so far in the States of Andhra Pradesh, Telangana, Kerala, Andaman & Nicobar Islands, Uttar Pradesh, Manipur, Jammu & Kashmir, Arunachal Bihar & Punjab using the Soil Stabilization/Full Depth Recycling Technology.

## TOTAL CO2 REDUCTIONS: OVER 35,000 TONNES

### SEGMENT WISE AVERAGE UCS STRENGTH RESULTS

SEGMENT	UCS STRENGTH (MPa) MINIMUM ACHIEVED		MODULI VALUES (MPa) MINIMUM ACHIEVED		AVG TOTAL SAVINGS NATURAL RESOURCES (%)
INFRASTRUCTURE	4.5	8.92	900	7422	91%
AIRPORTS	4.5	8.28	900	10444	75%
CITY ROADS NATIONAL	4.5	9.22	900	7987	64%
HIGHWAYS STATE	4.5	7.22	900	8200	84%
HIGHWAYS RURAL	4.5	5.88	900	9164	85%
ROADS	3	5.66	600	6806	80%



# PROJECT EXECUTED BY VSE USING STABILROAD®

## **INFRASTRUCTURE:**

1. KRISHNAPATNAM PORT, NELLORE (10 Lane-Km)
2. KATUPALLI PORT, CHENNAI (2.6 Lane-Km)

## **RURAL ROADS:**

1. SALIPETA – PORANKI ROAD, VIJAYAWADA, ANDHRA PRADESH (4.4 Lane-Km)
2. AIIB – PACKAGE 18 & 19 IN KRISHNA & PACKAGE 42 & 43 IN KURNOOL, ANDHRA PRADESH (100 Lane-Km)
3. LALRU – MALAN ROAD, PUNJAB (20 Lane-Km)
4. UTTAR PRADESH (257.2 Kms)

## **STATE HIGHWAYS:**

1. PURVANCHAL EXPRESSWAY – SERVICE ROADS, UTTAR PRADESH (10 Lane-Km)
2. ANAYADI – KODAL ROAD, KERALA (10 Lane-Km)
3. UTTAR PRADESH – 33 Roads ( Length 257.62 KM)

## **AIRPORTS:**

1. GMR INTERNATIONAL AIRPORT, MAIN RUNWAY & TAXIWAYS, HYDERABAD (7 LAKH SQM.)
2. MOPA international Airport, Goa Landside Roads (24 Lane-Km)

## **NATIONAL HIGHWAYS:**

1. NH4 – ANDAMAN AND NICOBAR ISLANDS (90 Lane-Km)
2. NH104/77 – BIHAR (40 Lane-Km)

## **CITY ROADS:**

1. NTR MARG, HYDERABAD (3.6 Lane-Km)
2. ECIL – AS RAO NAGAR ROAD, HYDERABAD (3 Lane-Km)

## APPROVALS & VALIDATIONS

- Accreditation by Indian Roads Congress, New Delhi
- Central Road Research Institute, New Delhi – Approval – Highly positive conclusions on UCS value, durability, residual strength elastic moduli and riding quality
- IIT-Chennai – Approval – Concluding no impact of leached substances or contamination in the soil and water
- IIT-Roorkee – Monitoring and ongoing research – Stating high strength, durability, elasticity, cement hydration and no new aggregates needed
- IITR Lucknow – Approval – for toxic free content in StabilRoad
- Research at IIT – Hyderabad and NIT – Warangal
- VSE's inhouse testing and support by TEEDE TEHNOKESKUS, Estonia



## COMPLETED PROJECTS

### **NHIDCL – NH4, Andaman Islands**

**Location:** Andaman & Nicobar Islands  
NHIDCL

**Road Length:** 90 Land Kms

**Technology:** Stabilization

### **Development of Truck Terminal, Berth Road**

**Location:** AP Krishnapatnam Port Company Limited  
(KPCL) Road

**Length:** 5 Kms

**Technology:** Stabilization

### **Rehabilitation and upgrading to Two Lanes/Two lane with Paved Shoulder of Sitamahri–Jayanagar–Narahia Road**

**Location:** NH104/77 NH 104/77, Bihar

**Road Length:** 40 Lane Kms

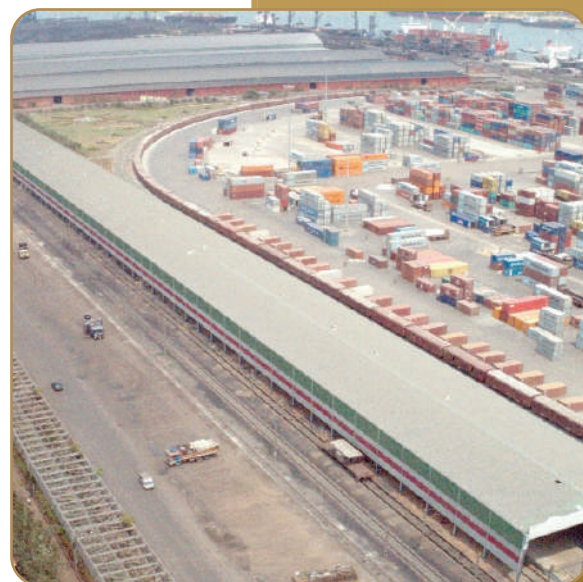
**Technology:** Stabilization

### **Rehabilitation of MV Road to Poranki H/W via SalipetaGanguru(V) of Penamaluru Mandal**

**Location:** Vijayawada, Andhra Pradesh – PR & RD  
Government of AP

**Length:** 2.265 Kms

**Technology:** Stabilization







### Internal Roads

**Location:** Katupalli Port, TamilNadu  
**Road Length:** 2.6 Lane Kms  
**Technology:** Stabilization

### Development of Internal Landslide Roads at MOPA International Airport, Goa

**Location:** Katupalli port, Tamilnadu  
**Road Length:** 24 Lane Kms  
**Technology:** Stabilization

### Development of Purvanchal Expressway

**Location:** Uttar Pradesh APCO – UPEIDA  
**Road Length:** 10 Lane Kms  
**Technology:** Stabilization



### Construction of Internal Roads at Andhra Sugars

**Location:** Andhra Sugars Plant,  
**Andhra Pradesh Road Length:** 4950 sqm  
**Technology:** Stabilization

### Construction of Approach Road

**Location:** Kothapatnam (V), Kota (M), SPSR Nellore District, Andhra Pradesh, Nekkanti Mega Food Park Private Limited  
**Technology:** Stabilization





**Quazigund to Banihal Highway Tunnel \***

One of the most critical projects for India to ensure all-weather connectivity to North Kashmir through the Pir-Panjal Pass. This tunnel shortens the distance between Srinagar and Jammu considerably. Twin tunnels of 8.45 Km each and 10m in diameter. High strategic importance to military services in the region.



**Naval Academy Ezhimala, Kerala \***

Situated on the West Coast of India (Ettikulam Bay & 7 Kms Beach), where a world-class academy with state-of-the-art architecture & construction. The sports complex and sailors accommodation was constructed in record time consisting of an Indoor Olympic Size Swimming Pool & Diving Pool, Indoor PT Shed and Drill Shed, elevated Parade Ground with 13 M high Retaining Walls.



*\*These Projects were completed by the Chairman when he was a Director in the previous company.*





### Construction of Road using Stabilization Technology

**Location:** Indira Gandhi Statue to Telugu Talli Statue (NTR Marg) Hyderabad, Telangana Road

**Length:** 3.6 Lane Kms

**Technology:** Stabilization



### Construction of Road using Stabilization Technology

**Location:** Kapra Circle, ECIL, Hyderabad, Telangana Road

**Length:** 3 Lane Kms

**Technology:** Stabilization



### Improvements to Anayadi - Pazhakulam - Kurampala- Keerukuzhi - Chandanappally - Koodal Raod by adopting Full Depth Reclamation (FDR) Technology

**Location:** Kerala, Kerala Road Fund Board (KRFB)

**Road Length:** 10 Lane Kms

**Technology:** Stabilization



### Strengthening of Lalru - Handesra Khelan Mallan Roadby way of Cold in Situ

**Location:** Punjab PWD B&R Branch, Punjab Road

**Length:** 20 Lane Kms

**Technology:** Stabilization

### Kakinada Anchorage Port

Improvement of Kakinada Anchorage Port Facilities under Sagarmala Programme  
Construction of - two wharves (90m and 110m length) for mechanical handling; loading points, strengthening of existing roads, special repairs to existing groynes and revetments, dredging of Commercial canal and Approach channel at Kakinada Anchorage (254,000 cum)



**Construction of Adani World School \***

**Location:** Nellore, Andhra Pradesh  
**Project Type:** Building works



**Execution of Palamuru Ranga Reddy Lift Irrigation Scheme Package- 10 in**

**Location:** Telangana- Formation of Venkatadri Reservoir bund from km 6.99 to Kms 11.55 at Vattem Billinepally (M), Nagar Karnool District (Mahabubnagar Dist). Mahaboob Nagar, Telangana  
**Project Type:** Irrigation works, Building Works



**Execution of Palamuru Ranga Reddy Lift Irrigation Scheme Package-1**

**Location:** Mahaboob Nagar, Telangana  
**Project Type:** Irrigation works



**Sundilla Barrage Left Bank Works, Peddapalli \***

**Location:** Telangana  
**Technology:** Irrigation works



\*These Projects were completed by the Chairman when he was a Director in the previous company.





### **Kaleshwaram Lift Irrigation Project \***

For lifting of 146.24 TMC of water with a total discharge capacity of 634 cumecs. Vertical lifting up to 110m, one of the highest lifts in Asia. Consists of twin tunnels, each 9.534 Kms long, 10m diameter, to elevate water into the surge pool. A display of engineering ingenuity by 100m underground construction.



### **Dhola – Sadia bridge \***

The longest River Bridge on the Brahmaputra in Assam. Being 9.5 Kms long, this bridge is of strategic importance to India.



### **Dibang – Lohit River Management System \***

Spread across a total length of 17.4 Kms, managing 11 tributaries and their diverse paths. One of the most challenging river management projects, done in sync with the construction, boat traffic and diverse flow paths of the rivers.

### **Dredging of Krishnapatnam Port \***

Berthing area, Turning Circle and Navigational Channel – Massive dredging done in Various locations, upto 36,00,000 CBM.

**Ongoing:** Mulapeta Port Dredging





# THE VISHWA SAMUDRA GROUP COMMITMENT

Unwavering commitment to conduct business ethically beyond borders has highlighted the ambitious vision of this dynamic Group.

The experience and credibility of the seasoned Vishwa Samudra team over the last decade has reflected their stellar work that has been transformative with futuristic thinking and commitment towards a sustainable environment. The multi-disciplinary services offered reflect our rich domain knowledge and agility



▶ **2013**  
Inception of **Sea Port Cargo Logistics** Forays into Warehousing & cargo Handling

▶ **2010**  
VS Group forays into Logistics with **East Coast Logistics Pvt. Ltd.**

▶ **2008**  
VS Group commenced operations of **Krishnapatnam Port**

▶ **2018**  
Commences Shipping services through **Vishwa Samudra Coastal Lines**

▶ **2017**  
Commences trading & Maritime Services by incorporating **Vishwa Samudra Shipment and Ocean 2 Door**

▶ **2016**  
Forays into Construction & Engineering by incorporating **Vishwa Samudra Engineering**

▶ **2021**

In 12 years, Krishnapatnam Port grew at a tremendous pace to become India's 2nd Largest Private Port and the 7th Largest Port overall.

▶ **2022** - - - - -  
**Start of Ecolastic Products**

▶ **2023** - - - - -  
**Commencement of VS Bio Energy**



# Infrastructure & Engineering

Highways, City Roads, Rural Roads, Airport Runways, Ports & Fishing Harbours, Dams, Ropeways, Bridges, Metro & Railways, Tunnels, Electrical & Irrigation



# Shipping Services

Bulk, Container, Coastal, Bunkering, Chartering



# Construction

Ports, Tunnels, Schools, Container Terminals, Warehouses, Irrigation, Marine Structures



# OUR BUSINESSES



# Maritime Services

Freight Forwarding, Cargo Handling & Storage, Custom clearance & value addition, Dredging services

# Security Services

Training, Skill Development & Deployment



# Real Estate

Residential, Commercial, Township Development

# Logistics

Bulk, Container, Liquid Transportation



# Manufacturing

Compostable Granules, Bags, Sacks/Bags, Facades

# Commodity Trading

Coal, Iron





## SOME OF OUR COMPANIES

### VS Bio Energy



Vishwa Samudra Bio Energy Private Limited ("VSBEPL") was incorporated in 2022, with an aim to manufacture bio-ethanol in Nellore, Andhra Pradesh. This 200 KLPD grain-based ethanol plant along with a captive power generation plant will supply to Oil and Marketing Companies (OMCs) under the GOI Ethanol Blending Programme (EBP) or in the open market. The Company will primarily produce bio-ethanol other by-products, such as carbon dioxide (CO<sub>2</sub>) and dried distillers' grains with soluble (DDGS), with the feedstock being broken/damaged rice or maize.

### VS Shipment Services



A fully diversified shipping services company offering solutions in the maritime industry such as - fleet management, dedicated transportation, customs house agents, cargo handling integrating vertically into the supply chain management.

### Ecolastic Products



Ecolastic Products Pvt. Ltd., India, is a bio-plastics manufacturing & research company established to innovate, design, develop & manufacture differentiated bio-plastic, biodegradable & compostable products. India's premier research organisation DRDO (Defence Research and Development Organisation), Ministry of Defence, Govt. of India, has collaborated with Ecolastic to replace single-use plastic products with compostable and biodegradable products. With finished products and raw materials, the company has a wide range of products across categories with certifications to sell across the globe.

### Facad Focus



A company that is into the manufacturing of aluminium and glass cladding that not only withstand the test of time but also transform the way you experience natural light, energy efficiency, and architectural beauty. This includes Curtain walls, Active Facades, Suspended Tension Cable Systems, Point Fix and Aluminium Cladding Systems, Aluminium glazing products - both thermally broken and non-thermally broken profiles.

### KP Sacks



KP Polyolefin Sacks Pvt Ltd. is a leading manufacturer of PP, HDPE woven sacks, Tarpaulins, Fabrics. The company has high focus on technical innovation and resource optimization with a capacity to process 900 mt of PP/HDPE granules every month, which translates to 9 million linear meters of basic PP/HDPE fabric.

These products are used in industries across fertilizers, cement, polymers, chemicals, textiles, machinery, automobiles, etc.



# CHINTA SASIDHAR FOUNDATION: NANDHA GOKULAM

The Chinta Sasidhar Foundation is set up with the intent to give back to society and create an ecosystem where humans and animals peacefully co-exist with nature. The Foundation is engaged in setting up progressive schools, Bull shelters, wellness centers, senior living spaces besides other meaningful ventures under its umbrella.



BULL SHELTER

ADOPT

SCHOOL

WELLNESS CENTRE

SENIOR LIVING SPACES



**Lakshmi Priyadarshini Chinta**  
Vice Chairperson  
Vishwa Samudra Holdings  
Chairperson  
Nandha Gokulam Life School

## NANDHA GOKULAM LIFE SCHOOL (NGLS)

The visionary Mr. Chinta Sasidhar has pledged to create an impact in education. The Foundation is committed to providing free education to students from the marginalized sections of society as well as setting up schools offering progressive international curriculum. NGLS is a residential school with state-of-the-art infrastructure and facilities, spread over 19 acres of campus. The school is set up to provide meaningful education to students from the marginalized sections of the society.



The primary objective of the foundation here is to **BUILD AN ECONOMY FOR BULLS IN INDIA**, to support farmers financially and to **REINSTATE THE LOST IMAGE OF THE HOLY BULL** by giving an opportunity to every male calf to live.







## EDUCATION VISION

NGLS aims to nurture children into responsible and connected citizens who will have the following distinguishable C7 attributes:

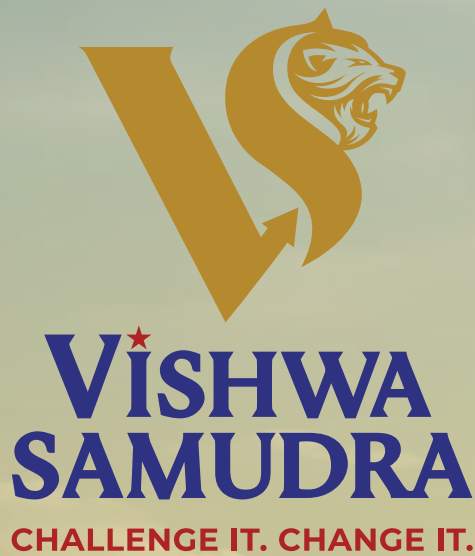
- Character
- Competence
- Caring
- Confidence
- Connected
- Collaborative
- Complete



## THE NANDHA GOKULAM FACILITY

- 250-acre facility in Nellore, Andhra Pradesh, India
- Phase 1 investment on Construction US\$ 18 Mn (INR 150 Cr)
- Capacity to hold 3000 cattle
- Cruelty-free, no-contact activities
- Bull Training area with Gallery
- Residential school for 500 boys from the marginalized sections of society
- International standards sports infrastructure
- School focusses on nurturing students to be sensitive towards animals and nature
- 5 Star cottages by the lake
- Innovations in product development with the Urine, Dung and Energy of Bulls
- A Wellness Centre with medicines derived from Cattle and Ayurveda
- 1800 varieties of medicinal herbs and trees; over 140 ayurvedic medicines made indigenously
- Digital Adoption of Bulls, Merchandise, Shop, App, Crypto, NFTs Animation & Games





## VISHWA SAMUDRA ENGINEERING PVT. LTD.

### **CORPORATE OFFICE**

8th & 9th Floors, Vamsiram Jyothi Valencia, Road No.  
2, Banjara Hills, Hyderabad - 500034  
+91 40 6799 6799

### **MUMBAI OFFICE 1**

Gate 4, 603, 6th floor, Universal Majestic, Govandi  
west, Mumbai 400043

### **MUMBAI OFFICE 2**

3rd Floor, Raheja Chambers, Main Avenue Crossing,  
Above Benetton Showroom,  
Linking Road, Santa Cruz West, Mumbai - 400054

### **MUMBAI OFFICE 3**

41- A1, Gurukruppa  
Aba Karmarkar Road, Yashodham,  
Goregaon, Mumbai  
Maharashtra 400063  
+91 91549 87230

### **DELHI OFFICE**

Unit No. 507, 5th Floor, Asset Area No.7,  
Hospitality District, Worldmark 3, Delhi  
Aerocity.  
New Delhi - 110037

### **GUYANA OFFICE**

Lot 1 south half  
Lamaha and Cummins street  
Alberttown, Georgetown

### **DUBAI OFFICE**

IFZA Business Park, DDP,  
Dubai Silicon Oasis, Dubai, UAE